

Distance Education in Turkey and Bulgaria
Examples from Universities, Course
Examples and Evaluation of Students'
Feedbacks

May 30-June 3, 2016
Trakia University - Stara Zagora
BULGARIA

- ***Distance Education in Turkey, Examples from Universities and Knowledge Management Process in Distance Education***

Prof. Sevinç GÜLSEÇEN

İstanbul University - Informatics Department

Assist.Prof. Gülser ACAR DONDURMACI

Zirve University - Computer Engineering Department

Assist.Prof. Ayşe ÇINAR

Marmara University - Faculty of Business Administration

- ***Volunteer Practicess in Distance Education: Community Service Applications Course at Istanbul University***

Assist.Prof. Zerrin AYVAZ REİS

İstanbul University - Hasan Ali Yücel Faculty of Education

What is Distance Learning

A modern education model which is conducted independently from time and location of education; and the Internet is used as research, communication, education and presentation tool in this model.

The Importance of Distance Learning for Turkey

- **Education opportunity is supplied to students who live in rural area.**
- **Lifelong education philosophy is formed via Distance Learning.**
- **Lectures which cannot be opened due to the lack of instructor staff can be accessed over the Internet.**
- **Knowledge of expert lecturers from different universities is utilized.**
- **Complicated subjects are learned more easily with prepared computer animations.**
- **Lectures can be accessed from records over and over again.**

Some Distance Education Institutions in Turkey

Government Universities

İstanbul University (İstanbul)

Anadolu University (Eskişehir)

Sakarya University (Sakarya)

Atatürk University (Erzurum)

Mersin University (Mersin)

Çukurova University (Adana)

METU (Ankara)

Gazi University (Ankara)

KTU (Trabzon)

Muğla University (Muğla)

Private Universities

Zirve University (Gaziantep)

Fatih University (İstanbul)

Aydın University (İstanbul)

Maltepe University (İstanbul)

Işık University (İstanbul)

Okan University (İstanbul)

Kültür University (İstanbul)

Ekonomi University (İzmir)

COMPONENTS OF A DISTANCE LEARNING SYSTEM

Learning Management System (LMS)

Content Management System (CMS)

COMPONENTS OF A DISTANCE LEARNING SYSTEM

Learning Management System (LMS)

LMS is a platform which is formed in order to be able to benefit from various lecture activities such as virtual class, assignments, online exams, discussion groups, archives, etc. and both for accessing and studying of students to lecture contents and to be able to use lecture materials in distance learning system.

COMPONENTS OF A DISTANCE LEARNING SYSTEM

Content Management System (CMS)

Contents are critically important in preparation of web-based distance learning system.

Infrastructure which is prepared for lecture can be used in various applications. It's pretty hard to say the same thing for lecture content. Standards are crucial at this point. To be formed of content with standards which are accepted in the world provides that contents can be able to used easily in different lecture systems.

The most used distance learning standards are *SCORM* and *AICC*'. Except these two standards; *IMS*, *ADL* and *LTSC* are used as well.

**ZİRVE UNIVERSITY
(Gaziantep)**

DISTANCE LEARNING SYSTEM

Distance Learning Programs

Undergraduate

Computer Engineering

Industrial Engineering

Management Information Systems

Postgraduate

Management of Health Institutions

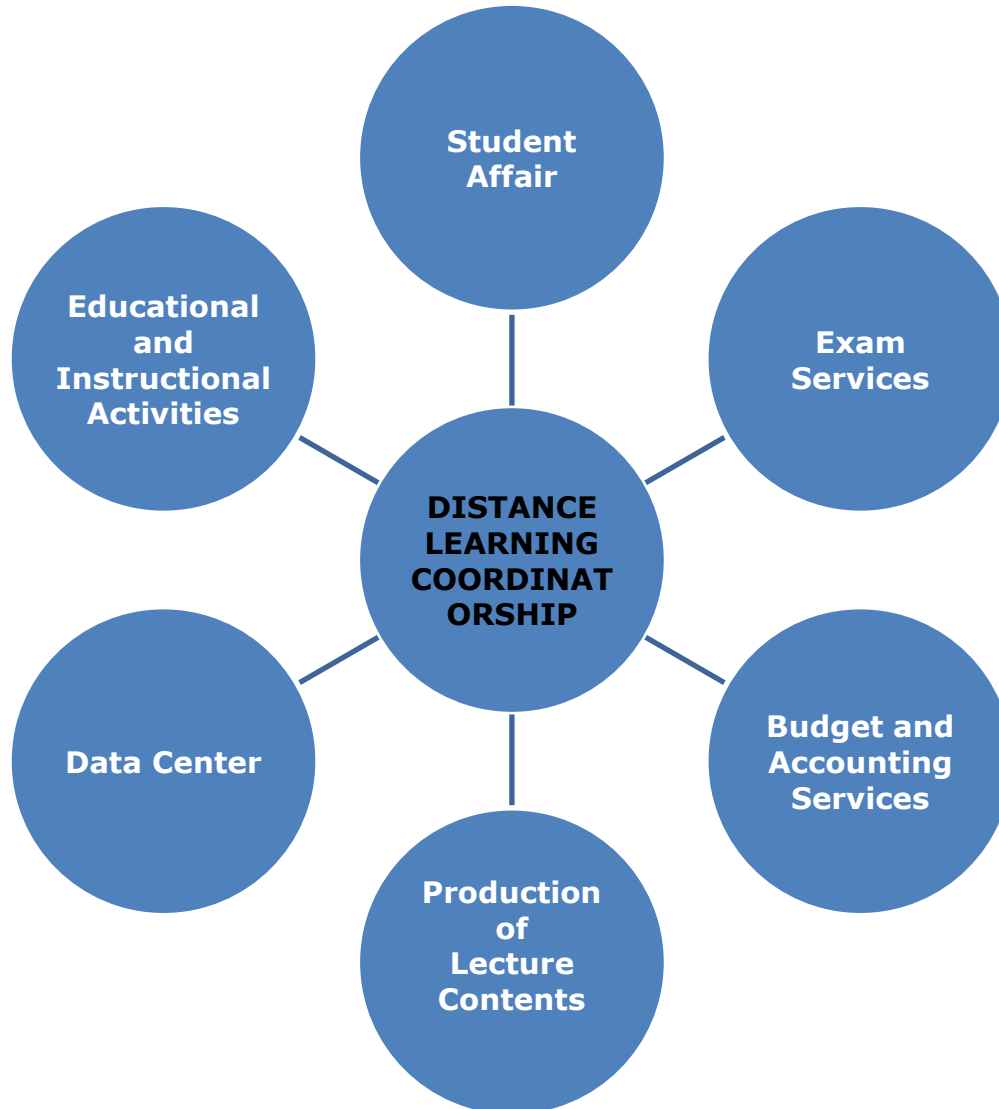
Master of Business Administration

Management Information Systems

Education Management

Engineering Management

Zirve University Distance Learning activities and organization

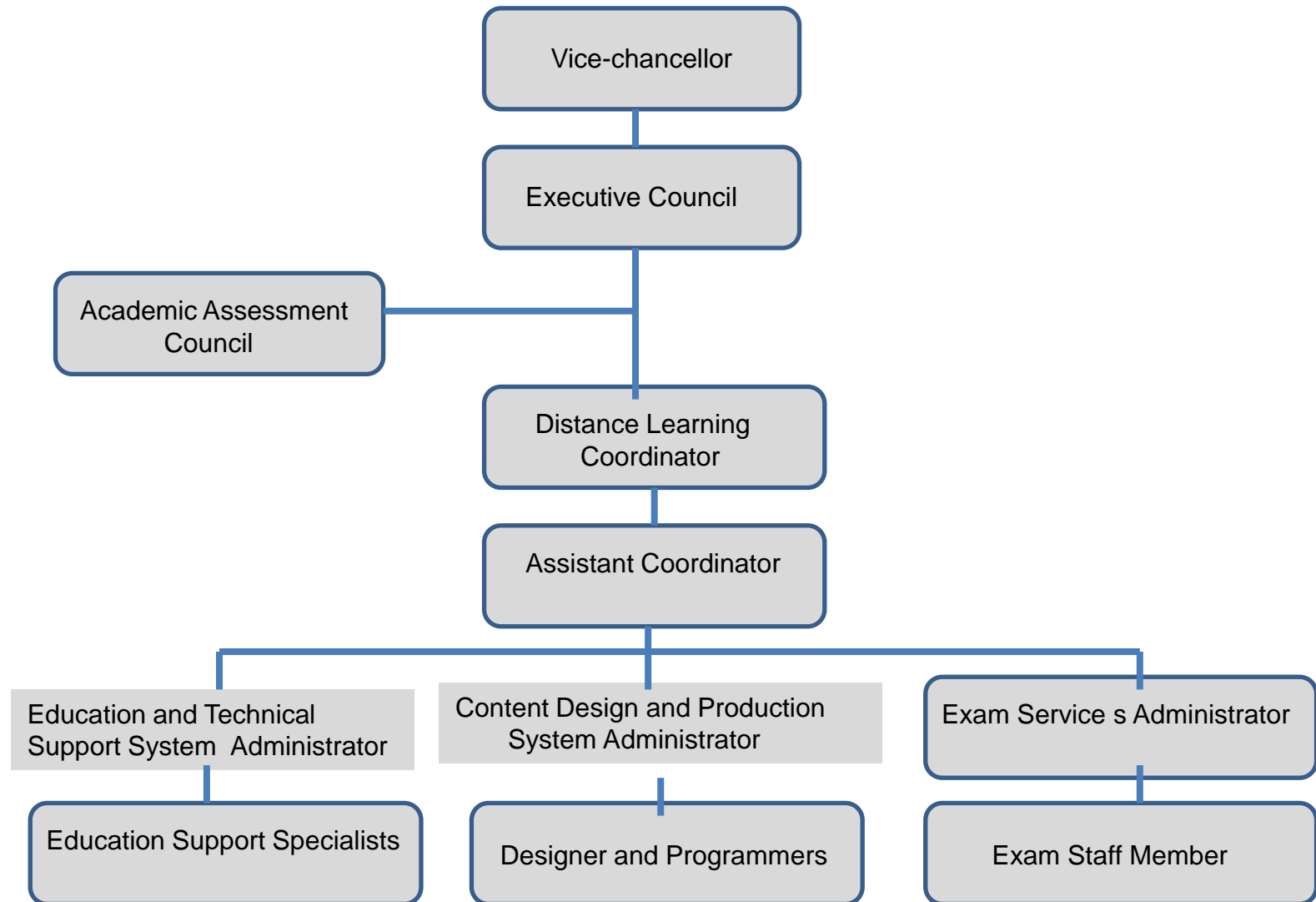


Management of Distance Learning System

Zirve University Distance Learning Activities are observed and managed by “Distance Learning Coordinatorship”.

Distance Learning Coordinatorship has been given a corporate structure so that it can perform the tasks.

Required Academic, Administrative Technical Services for the distance presentation of programs:



Program coordinator

- A program coordinator is assigned to each program.
- The program coordinator manages related distance learning program in terms of academic.
- Program Coordinator who is also a member of the Academic Assessment Council directs the program in terms of academic.

Eductaion and Technical Support Unit

“Distance Learning Coordinatorship” incorporates “Education and Technical Support Unit”. Academic and technical support services are provided to students through the unit.

While students and instructors are using the system, this unit personnels assist them in case they are exposed to any problem. Support personnels control the operation of virtual classes instantly and interfere the problems which are arisen.

Content Design and Production Unit

Instructional Design (domain expert/instructor)

Scenario preparation

Content production

Exam Services Unit

Organization of exam questions pool

Organization of exams

Implementation of exams

Evaluation of exams

Users

- **Students**
- **Instructors**
- **Program Chairmens**
- **Academic Consultants**
- **Education Support Specialists**
- **Technical Support Specialists**
- **Administrators**



The Basic Components of Zirve Distance Learning Platform

Zirve University Distance learning programs are conducted by the Learning Management System which we called as **Distance Learning Platform**.

This software has the following basic tools:

- Messages**
 - Lecture plans**
 - Academic calender**
 - Personnel Information**
 - Password operations**
 - Presentation of lecture contents**
- Midterms Assignments**
- Lecture materials**
 - Transcript (Carnet)**
 - Virtual class**

Learning Management System and Virtual Class

The screenshot displays the ZİRVE University Distance Learning System interface. The top section shows a user profile for Mehmet Fatih ÖZKAN. Below this, a table lists courses:

Ders Kodu	Ders Adı	Öğretmen Kodu	Ders Durumu	Ders İçeriği	Ders Puanı
ZYL503	Veri Ambarı	01	Sınıfın Başlatılması	İçerik	İçerik
SPS,VM001	Veri Madenciliği	01	Sınıfın Başlatılması	İçerik	İçerik

The bottom section shows a virtual class session titled "Veri Ambarı mimarisi". The session includes a video feed of a participant, a list of participants, and a diagram illustrating the data warehouse architecture. The diagram shows a central "Veri Ambarı" (Data Warehouse) connected to various data sources and targets.

ZİRVE University Distance Learning Platform has various tools regarding education.

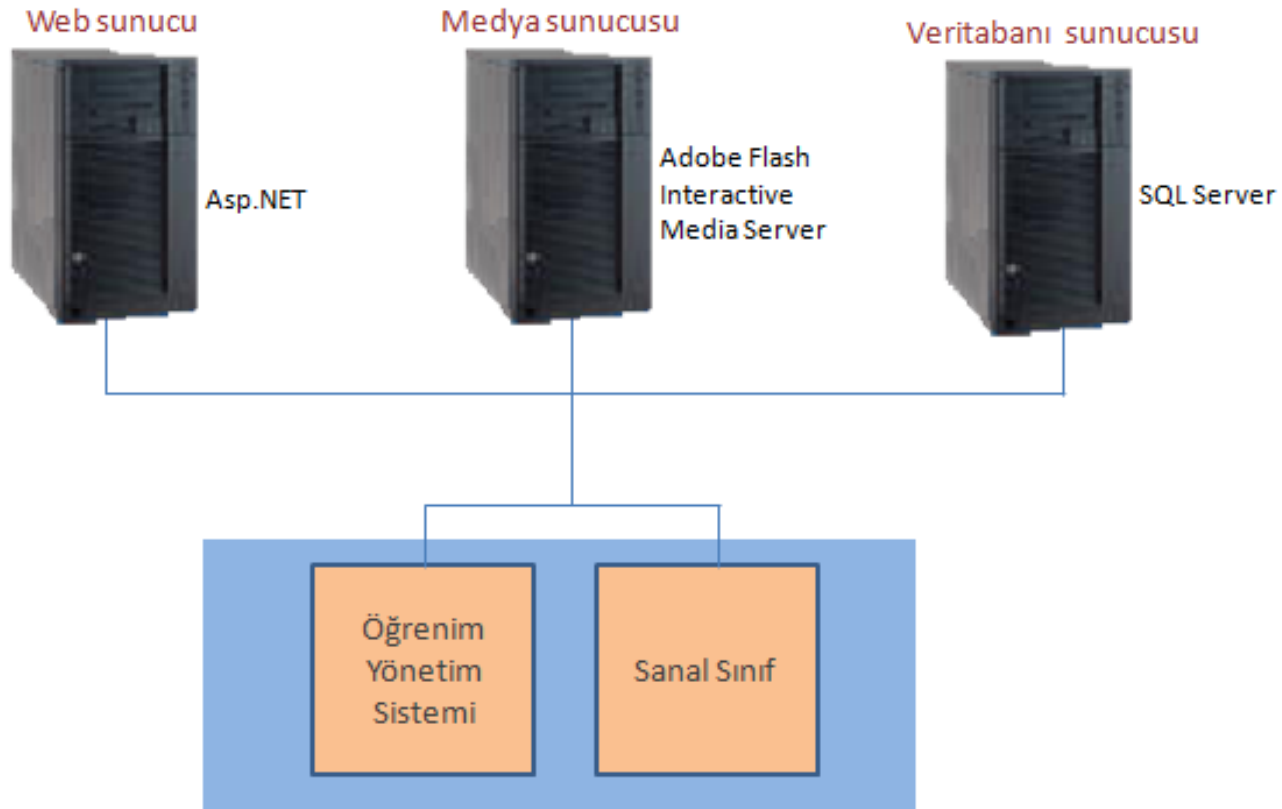
Presentation Techniques

Synchronous and asynchronous presentation techniques are applied for each program. Lecture contents are presented asynchronously and interactively.

Synchronous presentation of each lecture is performed in virtual classes.

(Zirve university has a virtual class software for synchronous presentations)

ZİRVE Üniversitesi Uzaktan Eğitim Platformu Mimarisi



Creating and presentation of lecture contents

Lecture contents are formed by the “Content Design and Production Unit” which is within Zirve University Education Coordinatorship.

The process which is from providing lecture notes by the related instructor to presentation of the web based lecture contents to the students is conducted by the related unit.

Lecture contents are enriched with animations and the other multimedia techniques.

Presentation of lecture contents are done with the presentation tools within the distance learning platform. Students may achieve these contents whenever they need.

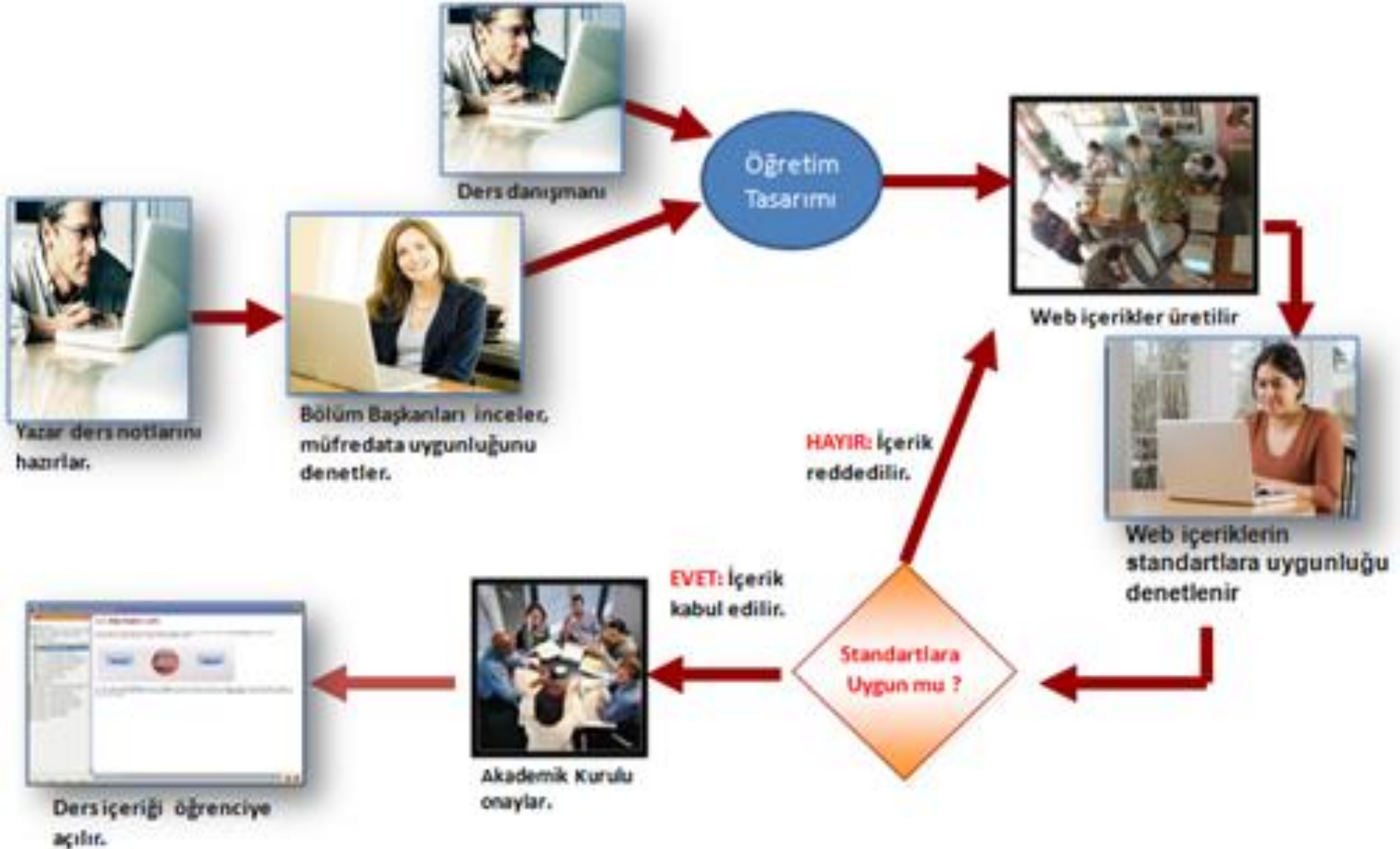
Required Education Design of Lectures for Distance Presentation

Required education design of lectures for distance presentation is implemented by the **“Content Design and Creation”** unit.

Designer who works with lecture consultant provides the lecture that can be learned.

Therefore; a desing which specifies learning targets and provides students so that they may achieve the targets is created.

Akademik ders içerikleri üretim süreci



An Example for an Academic Content

BÖLÜM 2 - EPİSTEMOLOJİ (BİLGİ KURAMI)

Dizin

- ☐ Ders Hakkında
- ☐ BÖLÜM 1 - FELSEFE KAVRAMI VE FELSEFİ DÜŞÜ
- ☒ BÖLÜM 2 - EPİSTEMOLOJİ (BİLGİ KURAMI)
 - ☐ Bölüm Hedefi
 - ☐ 2.1. Felsefenin Temel Bir Sorusu Olarak Bilgi N
 - ☒ 2.2. Bilgi Bağları (akt)
 - ☐ 2.3. Bilginin Olanaklığı ve Sınırları
 - ☐ 2.4. İlk Çağda Bilginin Olanaklığı Problemi
 - ☐ 2.5. Yeni Çağda Bilginin Olanaklığı Problemi
 - ☐ 2.6. Bilginin Kaynağı ve Ölçütü Problemi
 - ☐ 2.7. İlk Çağ Akılcılığı (Rasyonalizmi)
 - ☐ 2.8. Tümeller Kavgası
 - ☐ Değerlendirme Soruları
 - ☐ Kaynaklar
- ☐ BÖLÜM 3 - BİLGİ KURAMI AÇISINDAN YENİ ÇAĞ A
- ☐ BÖLÜM 4 - VARLIK FELSEFESİ (ONTOLOJİ)
- ☐ BÖLÜM 5 - DEĞERLER FELSEFESİ
- ☐ BÖLÜM 6 - ESTETİK (SANAT FELSEFESİ)
- ☐ BÖLÜM 7 - SİYASET VE DEVLET FELSEFESİ
- ☐ BÖLÜM 8 - DİN FELSEFESİ ve METAFİZİK
- ☐ BÖLÜM 9 - İNSAN FELSEFESİ
- ☐ BÖLÜM 10 - BİLİM FELSEFESİ
- ☐ Ders Sonu

2.2. Bilgi Bağları (akt)

Suje ve obje arasındaki ilişkiyi kuran bilgi aktlarıdır, bağlardır, edimlerdir. Bu aktların, kuşkusuz **suje tarafından** yönlendirilmesi, isteklendirilmesi, güdülendirilmeleri, dahası denetlenebilmeleri gerekir.

Bu aktları sağlayan **temel bilişsel (cognitive) yetiler** ise, psikoloji biliminin alanına giren, algılama, dikkat, akıl yürütme, bellek, imgelem vb. dir. Tüm bilişsel yetiler, bilgi edinme sürecinde objeyle sürekli ilişki ve etkileşim içinde olurlar. **Bilgi edinme**, sujenin objeyle kurduğu edimsel ilişki sonucu kazanılır

Dizin Not Al Yazdır Şablon

2.2. Bilgi Bağları (akt)

On-Line Evaluation System

The aim of Evaluation System is evaluating the academic activities, technical infrastructure, the success of the infrastructure and the quality of services.

- Questionnaires applied to students by instructor during the lecture
- Questionnaires applied to students regarding the performance of instructor
- Questionnaires applied to both students and instructors by the end of semester regarding the quality of services supplied by the institution

Library Services

Zirve University Library provides the resources to distance learning students which they require them via photocopy or scanning.

A personnel is assigned in order to provide this service for distance learning system.

Measurment and Assessment Services

- Midterms
- Assignment/Project**
- Joining Activities
- Final Exams**
- Success Score by the end of term

Success Score of a Student

Success Score = %20 of in term activities grades + %80 of final grade